

ARCHAEOLOGY

Archaeo 202 – 2017
Alfred F. Pawlik

ARCHAEOLOGY

READINGS (available at ASP Library)

Bahn, Paul and Tidy, Bill 2000 - *Archaeology: A Very Short Introduction*. Oxford University Press.

Collins, Desmond 1986 – *Prehistoric Europe*. Coterose, Devon.

Gräslund, Bo 2008 - *The Birth of Prehistoric Chronology: Dating Methods and Dating Systems in Nineteenth-Century Scandinavian Archaeology*. New Studies in Archaeology. Cambridge University Press.

Klein, Richard G. 2002 - *The Dawn of Human Culture*. Wiley, Inc.

Lee, Richard B. (ed.) 2005 - *The Cambridge Encyclopedia of Hunters and Gatherers*. Cambridge University Press.

Renfrew, Colin and Bahn, Paul 2000 - *Archaeology: Theories, Methods and Practice*. Thames & Hudson.

Sherratt, Andrew (ed.) 1980 - *The Cambridge Encyclopedia of Archaeology*. Cambridge University Press.

Whitley, David S. 2005 - *Introduction to Rock Art Research*. Left Coast Press Inc.

ARCHAEOLOGY

More Information, handouts, updates, files, etc.:

<http://pages.upd.edu.ph/pawlik>



Alfred F. Pawlik
Archaeological Studies Program
Albert Hall, UP Diliman (*email*)



Home

Bio

Classes

Publications

Calendar

News

Academia.edu

ResearchGate

Google Scholar

Archaeological
Studies Program

UPD Library

UP CRS

Classes

Add New



Archaeo 2 - Archaeological Heritage

Offered: 2016

+ Add class material

+ Add new comment

Archaeo 202 - History of Archaeology

Offered: 2015

+ Add class material

+ Add new comment

Archaeo 243 - Lithic Analysis

Offered: 2015

+ Add class material

+ Add new comment

Archaeo 300 - Master's Thesis

Offered: 2015

+ Add class material

+ Add new comment

Archaeo 399 - Independent Study

Offered: 2015

+ Add class material

+ Add new comment

Archaeo 245 - Geoarchaeology

Offered: 2014

+ Add class material

Alfred Ferdinand Pawlik

Occupation:

I teach Prehistoric Archaeology, Lithic Analysis and field and lab courses in Archaeology at the University of the Philippines. I am specialised in prehistoric technology and the functional analysis of stone tools, and pioneered in the identification of hafting and complex technologies.

Academic background:

I am interested in Stone Age Archaeology and the reconstruction of hominin behaviour and technology. I studied Pre- and Protohistory and Geology at the University of Tübingen in Germany where I completed my Ph.D. in 1995.

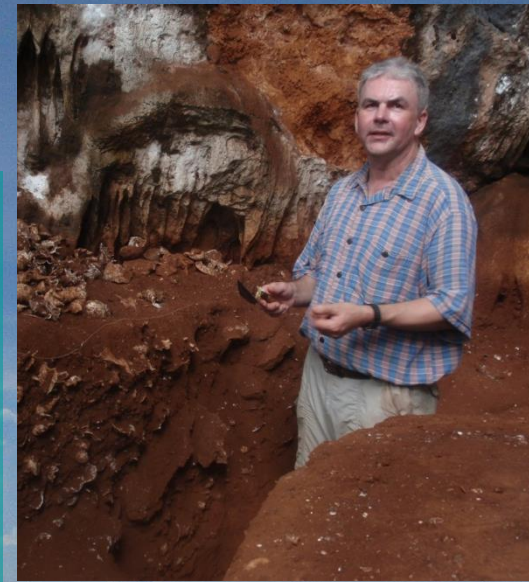
Current work:

I am engaged in various research projects in Island Southeast Asia as well as in Europe. Currently, I head an excavation in Mindoro directed at understanding early peopling and maritime adaptation in the Philippines.

I also conduct analysis of lithic assemblages from various Neolithic to Middle Palaeolithic sites in Europe, among them the type locality of *Homo neandertalensis*, Feldhofer Grotto in the Neandertal valley, and other key locations.

Research in context:

The understanding of hominin migration and adaptation to special environments is of great importance for the Prehistory of the Southeast Asian region. Likewise is the identification of the use and purpose of stone tools extremely relevant for reconstructing the behavioural and cognitive evolution of hominins.





Magsaysay, Mindoro Occidental

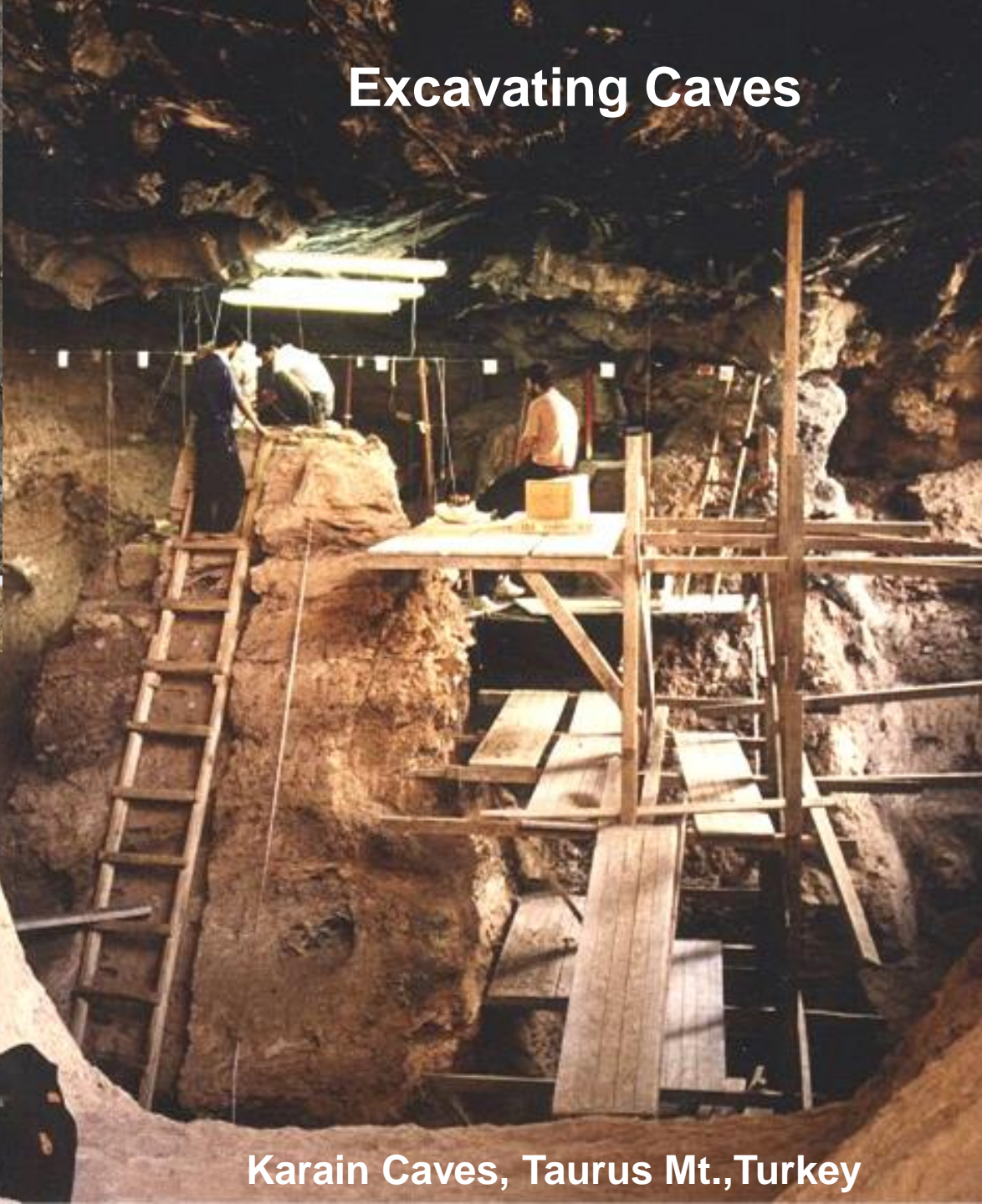
Field survey



Finding caves



Liang Bua, Flores



Excavating Caves

Karain Caves, Taurus Mt., Turkey

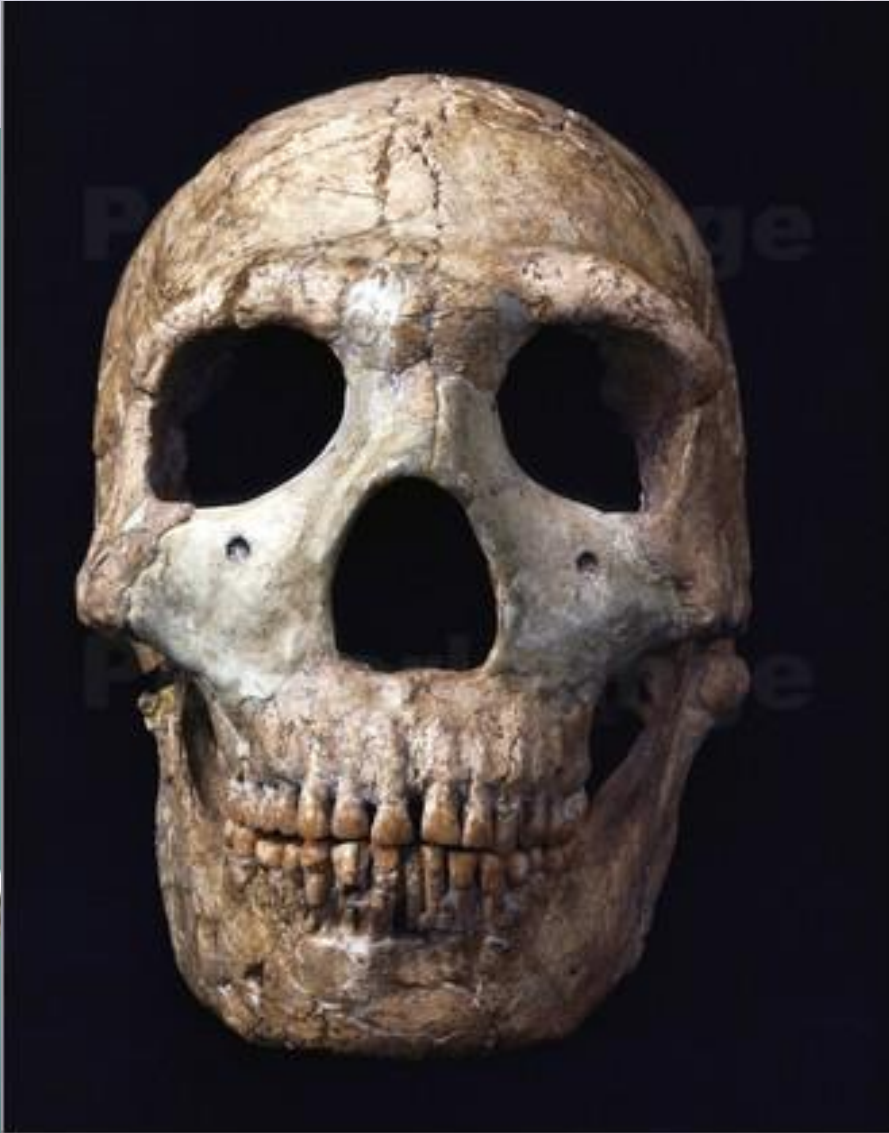
Excavating open sites



Porac, Pampanga



Rescue excavation



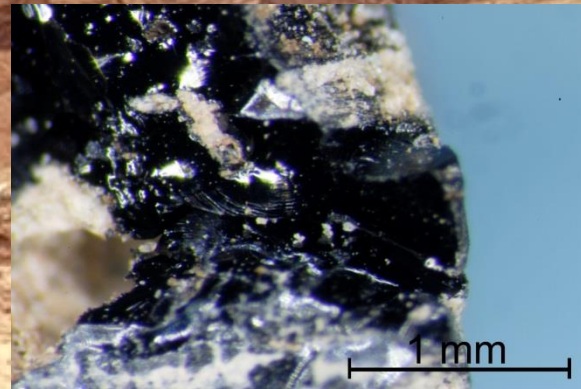
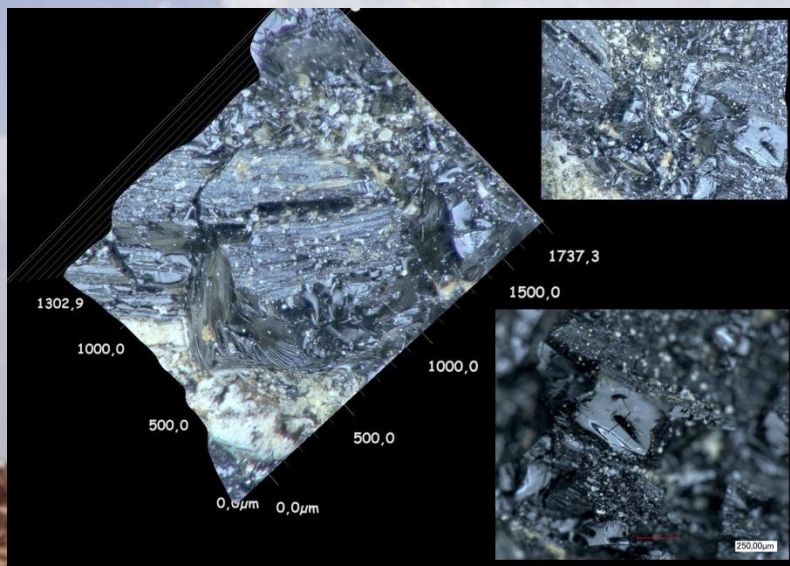
Neanderthal skull from Wadi Amud, ca. 60ka BP



Early Homo sapiens skull from Qafzeh, ca. 100ka BP

Inden-Altdorf

Rescue excavation



Artefacts with hafting residues:
Oldest synthetic product:
Birch pitch: ca. 120ka



Inden-Altdorf

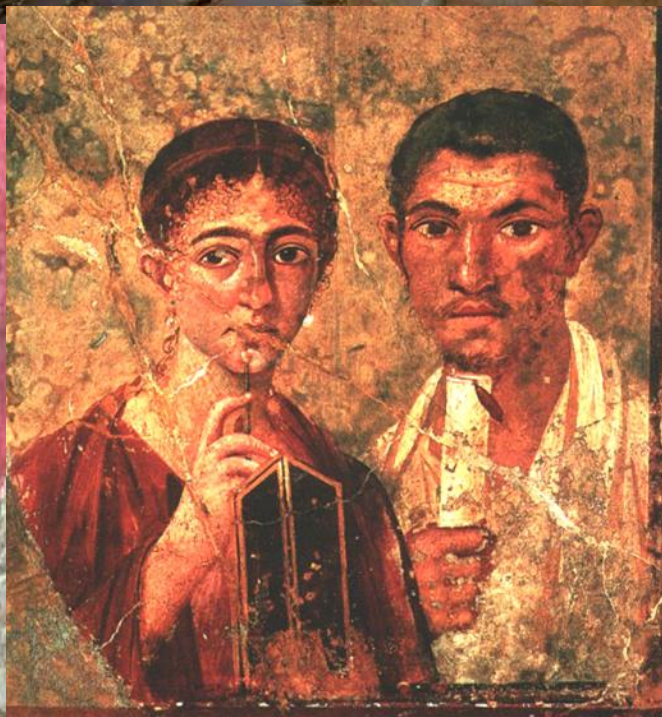
Archaeological monuments



Johann Joachim Winckelmann



Colosseum / Rome
'Amphitheatrum Flavium'



Pompeii, Italy



**The last day of
Pompeii, Italy.
24 August 79 AD**



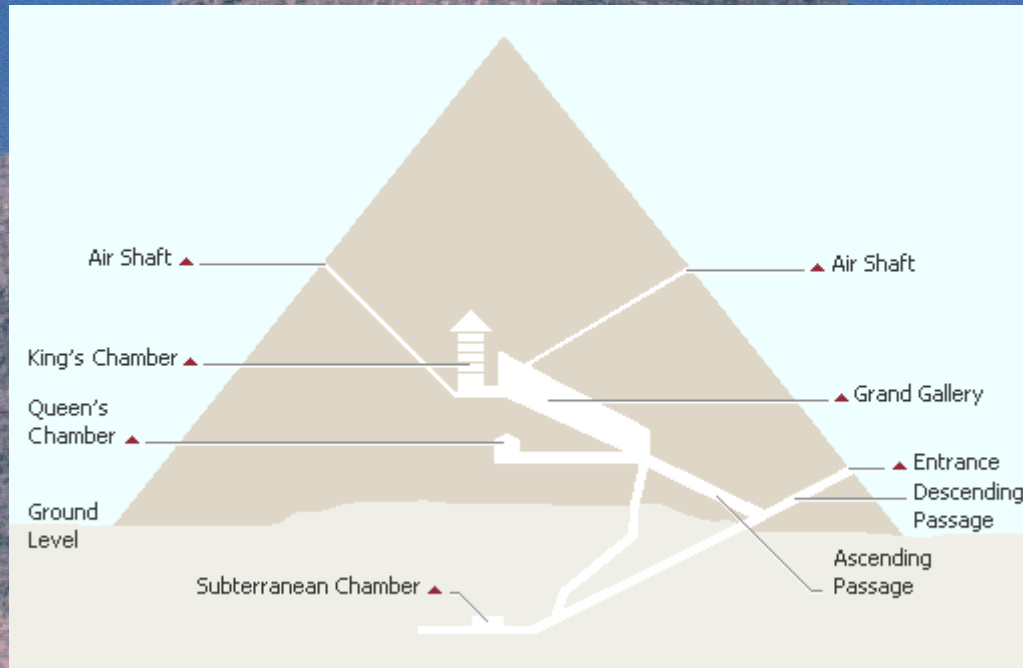
Stonehenge / England

Hagar Qim / Malta





Angkor Wat / Cambodia



Giza: Pyramid of Cheops (Chufu) / Egypt



Giza, Egypt: Sphinx



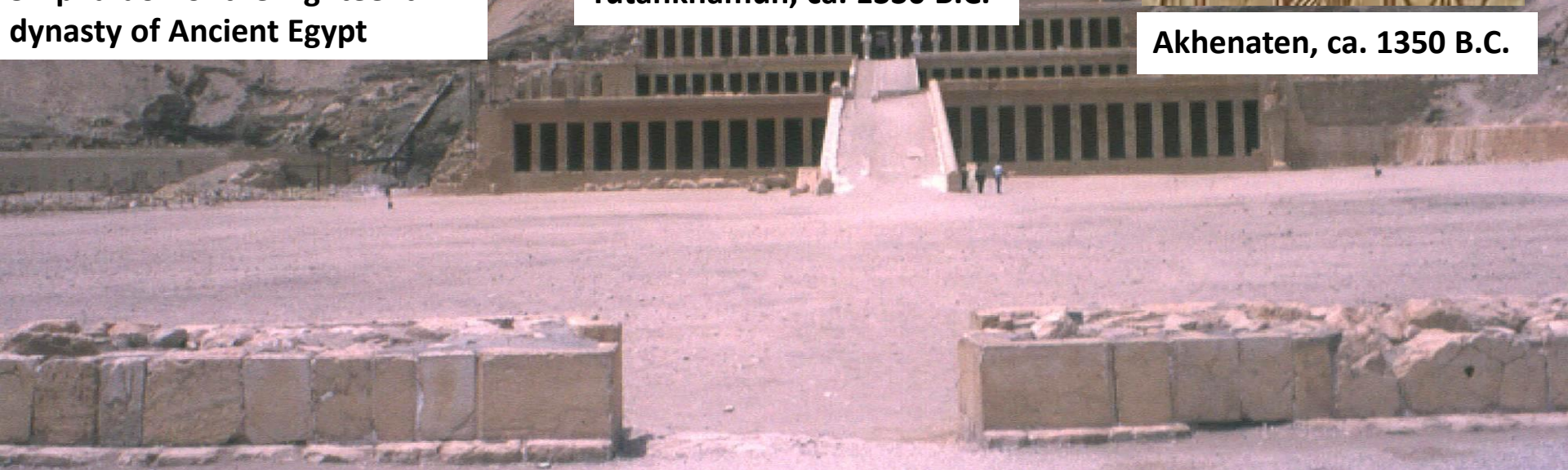
**Hatshepsut, ca. 1508-1458 B.C.
5th pharaoh of the Eighteenth
dynasty of Ancient Egypt**



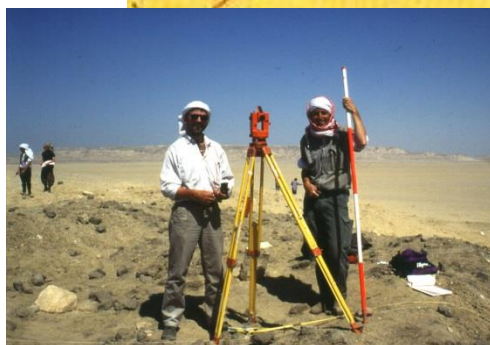
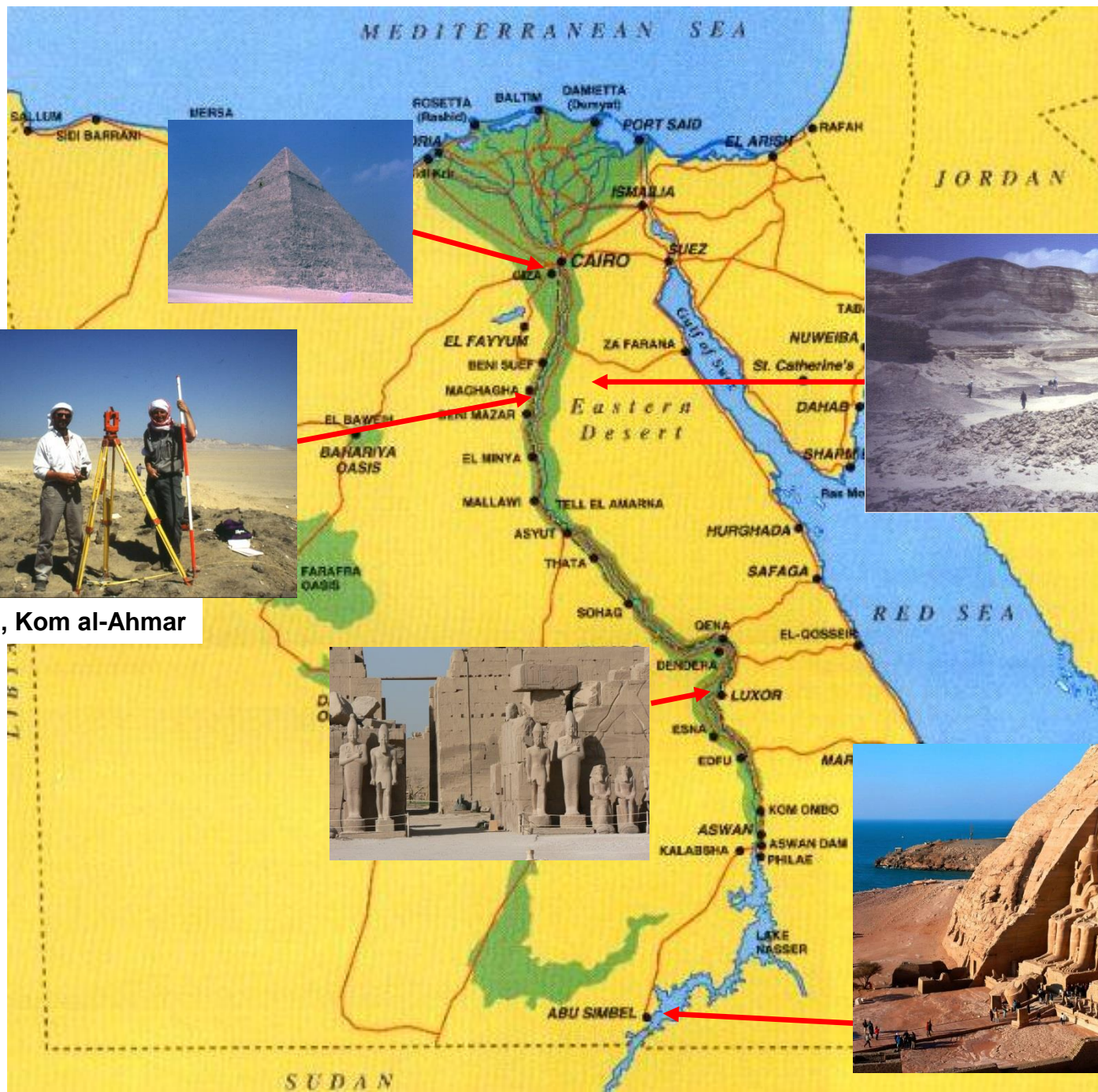
Tutankhamun, ca. 1330 B.C.



Akhenaten, ca. 1350 B.C.



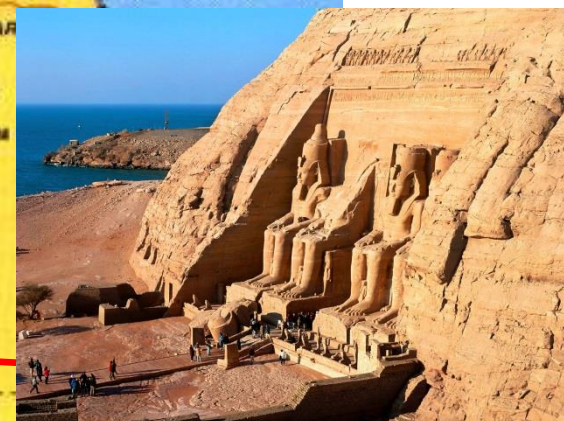
Luxor / Valley of Kings: Temple of Hatshepsut



Šaruna, Kom al-Ahmar

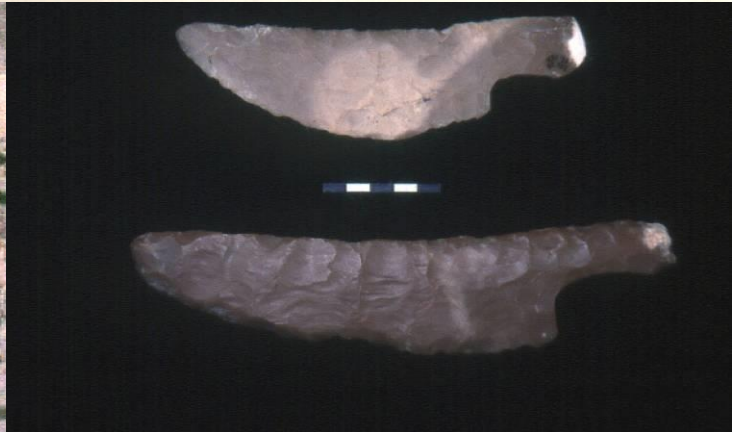
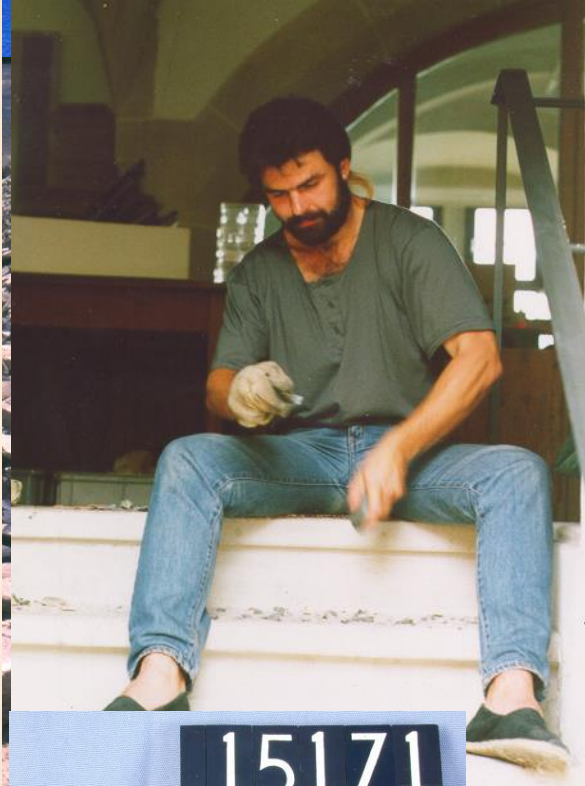


Wadi el-Shaikh





Šaruna, Kom al-Ahmar, the Necropolis / Egypt



Wadi al-Sheikh / Egypt

The art of tool making: Flint knapping



Clovis points, Northern America, 13–10 ka BP.



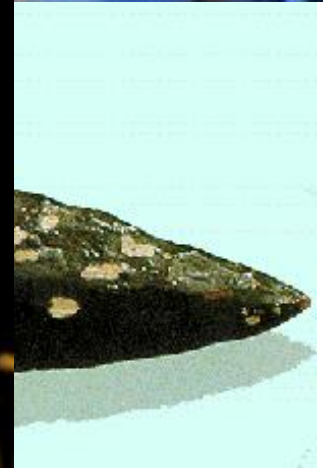
Solutrean points, France, 22–18 ka BP.



'Dresden Codex', Maya, Post-Classic Period, ca. 900-1200 AD, Chichen-Itza, Yucatan, Mexico



'Eccentric Flint', Maya, Classic Period, ca. 250-900 AD, Central America



When did humans begin building homes?

Palaeolithic: Inden-Altdorf, Lower Rhine valley, GER

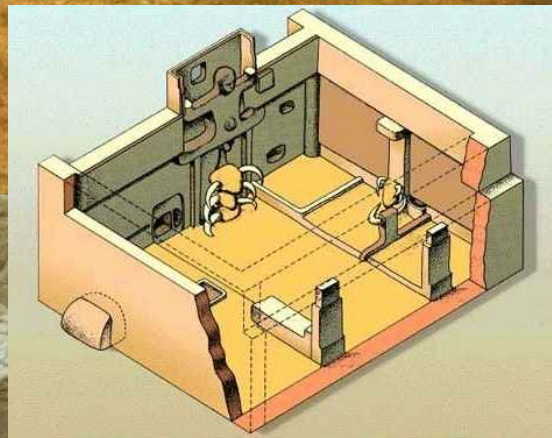
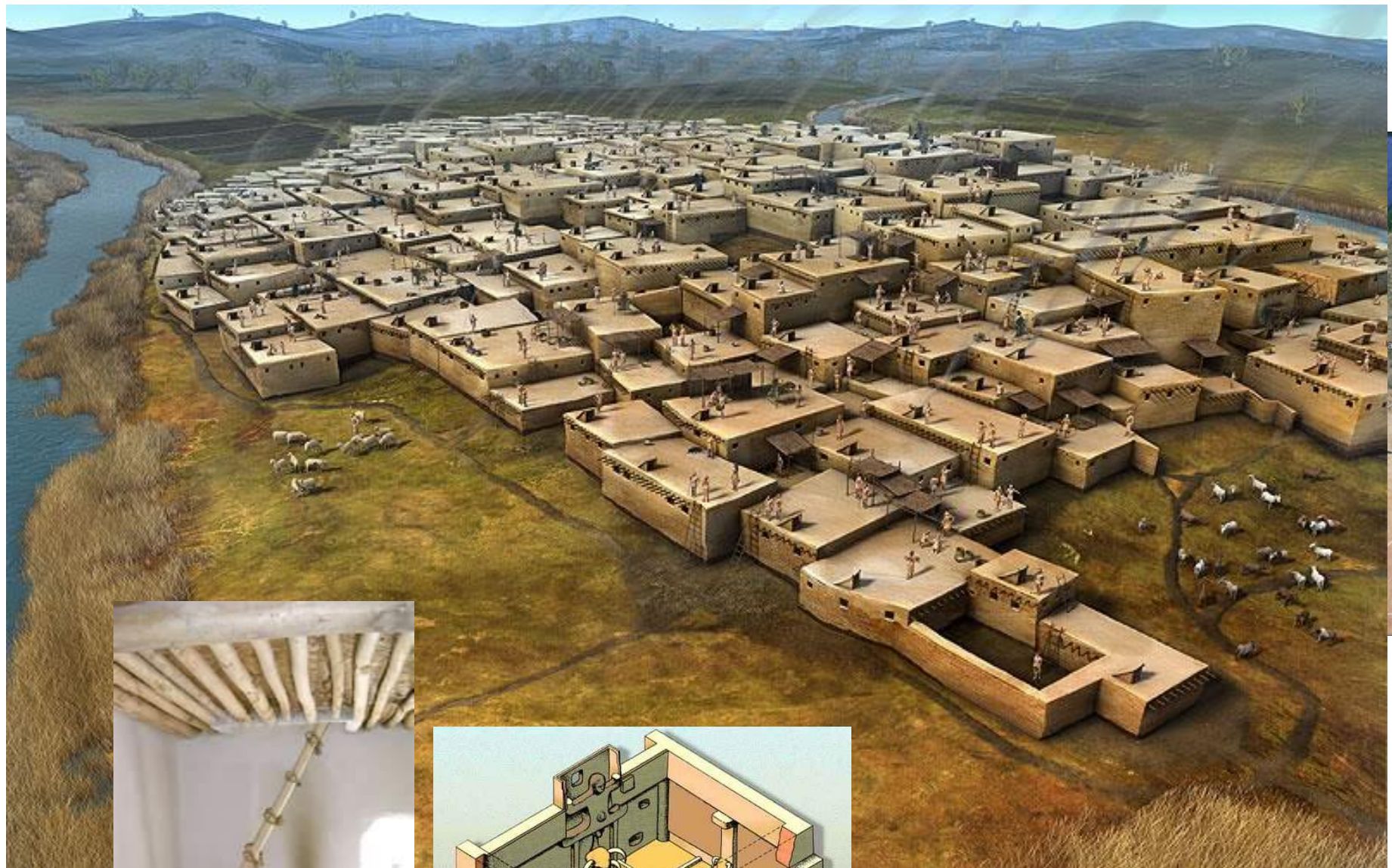


“Fallen-tree-shelters”?

Neolithic: 100,000 years later somewhere in Turkey...



Çatalhöyük, Turkey
Creation: 9000 B.)
Apogee: 8500-8000 B.P
Population: c. 5000



Çatalhöyük, Turkey
Creation: 9000 B.)
Apogee: 8500-8000 B.P
Population: c. 5000

Oracle of Delphi / Greece





Island of Crete: Minoan Palace at Knossos



Troy / Turkey

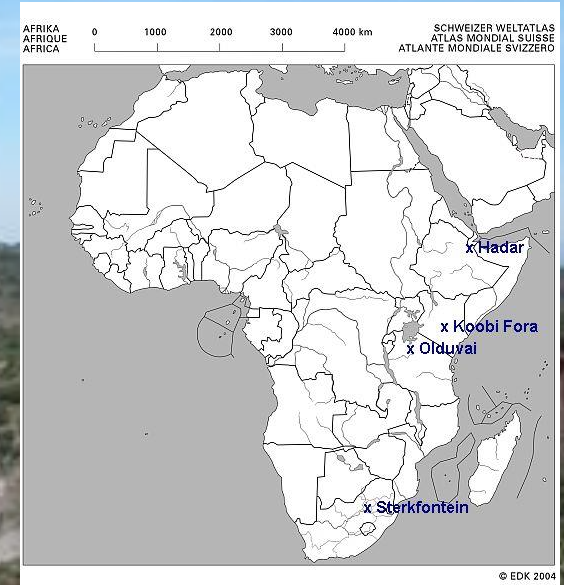


Mycenae (The Lion Gate) / Greece



Aegean Sea

Olduvay Gorge, Tanzania



Lucy, *Australopithecus afarensis*. 3.2 my



a



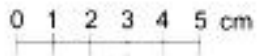
b



c



d



e



First stone tools, Kada Gona, Ethiopia, 2,6 My



f



g



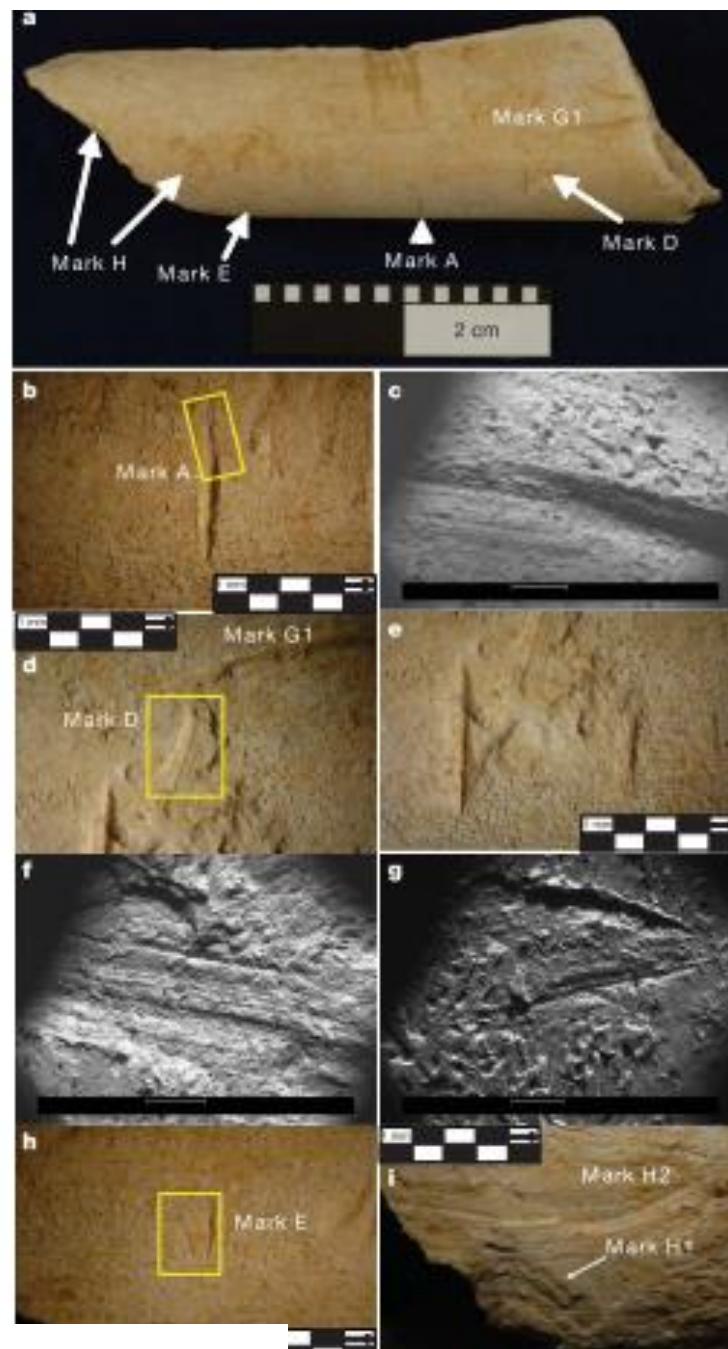
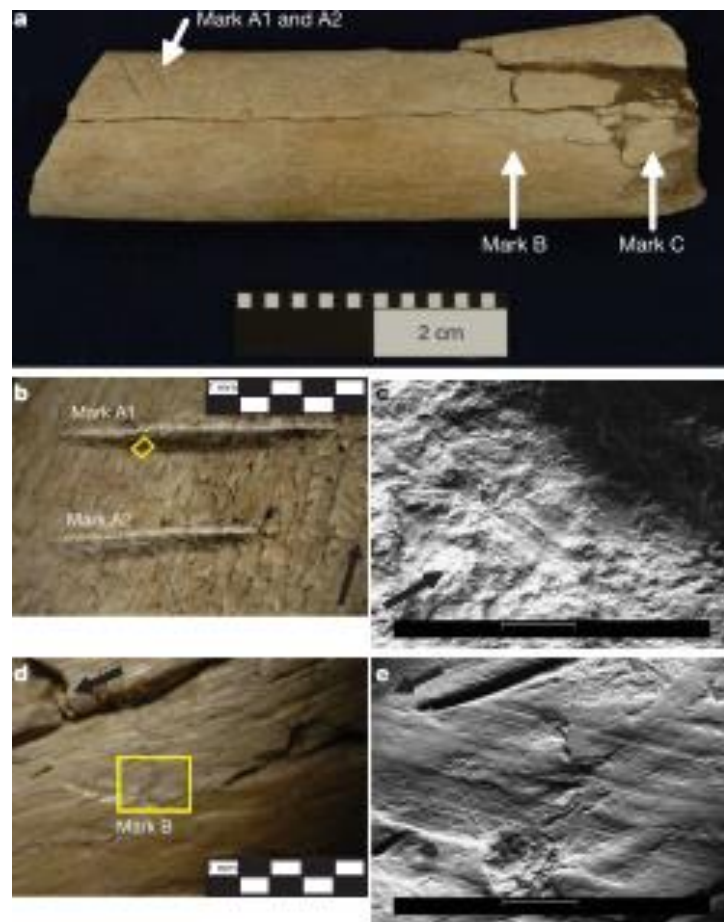
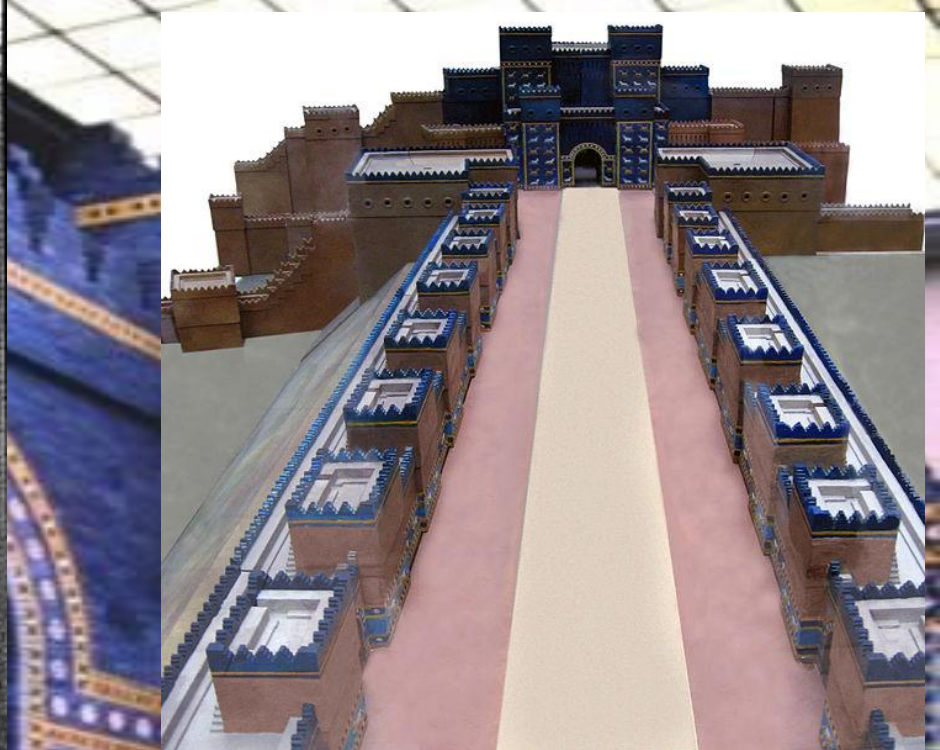


Figure 2 | Stone-tool-inflicted marks on DIK55-2, a rib of a probably size 4 or larger ungulate. **a**, The exterior surface of DIK-55-2, and the location of each of the surface marks. The rib is oriented such that the rib head (broken off) would be to the left. Dashed rule, 4 cm. **b**, Marks A1 and A2 (high-confidence stone-tool cut marks) under low-power optical magnification; the yellow rectangle demarcates **c**. Scale bar, 5 mm. **c**, ESEM image showing microstriations indicative of cutting with a stone tool. Scale bar, 100 μm. **d**, Mark B (high-confidence stone-tool-inflicted mark) under low-power optical magnification, indicative of a cutting and scraping action or percussion; the yellow rectangle demarcates **e**. Scale bar, 5 mm. **e**, ESEM image showing microstriations indicative of stone tool action. Scale bar, 100 μm. **b–e**, The direction of the rib head is indicated by the black arrows. See Supplementary Information for the details of mark C.

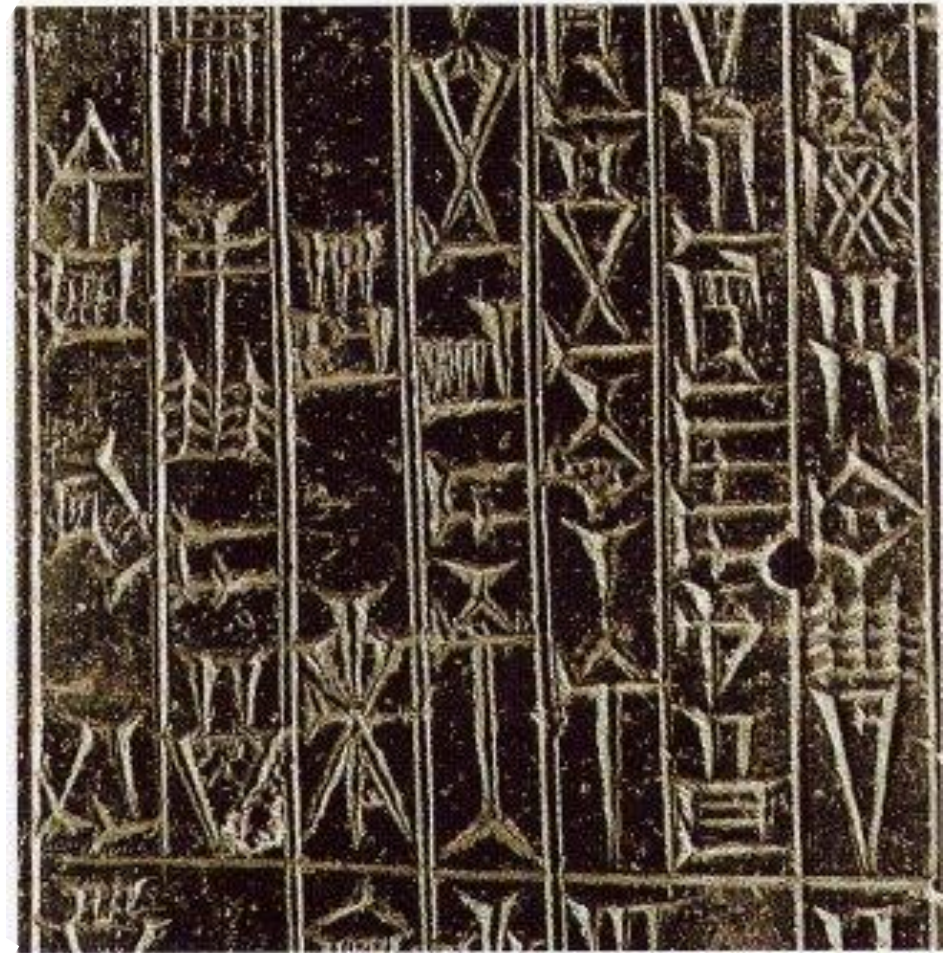
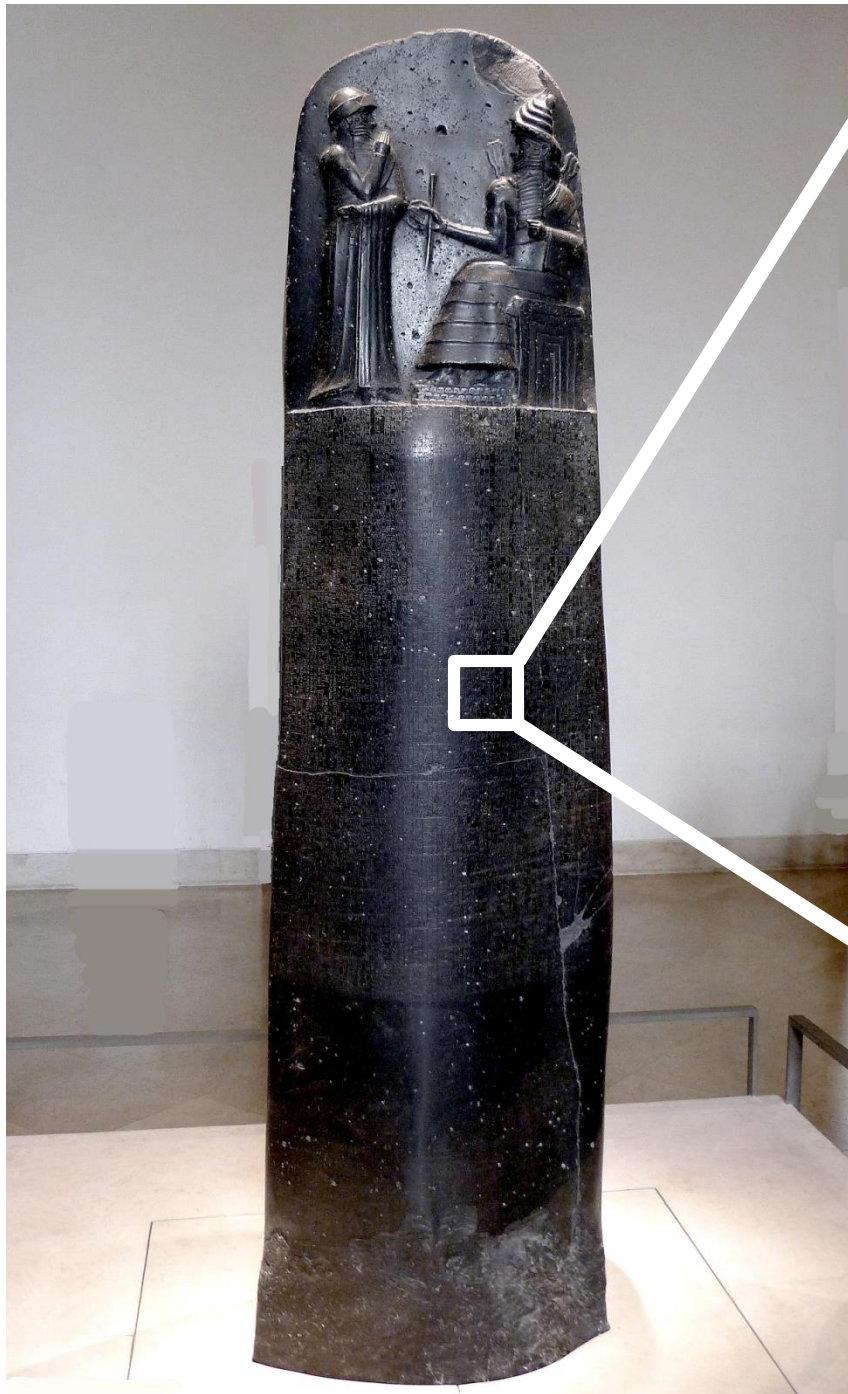
Cut Marks, Dikika, Ethiopia, 3,4 My



**Bar'an Temple or Throne of Queen Bilqis
(Queen of Sheba) / Marib, Jemen**



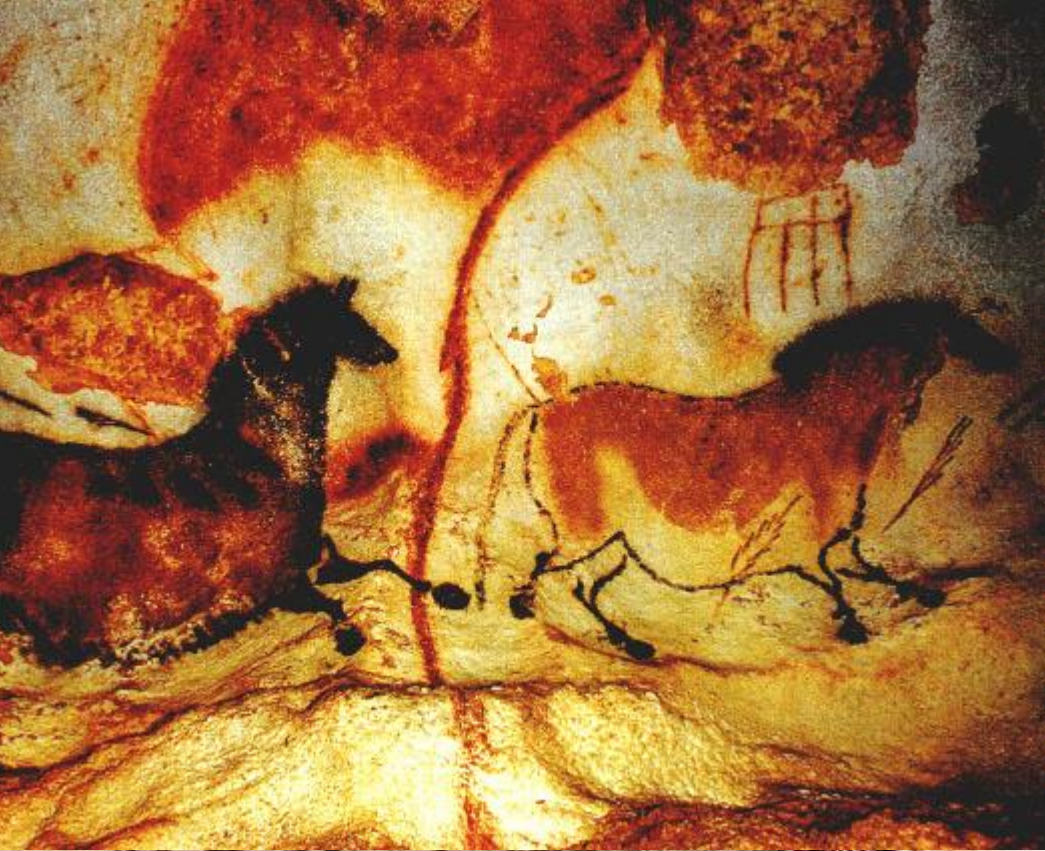
Ishtar Gate of Babylon / Iraq
Nebuchadnezzar II. (605–562 BC)



**Code of Hammurabi,
Susa, Iran. Origin Babylon,
Sippar? Mesopotamia/Iraq.
Between 1792 – 1750 B.C.**



Macchu Picchu / Peru



Lascaux / France



Lascaux,
Dordogne,
France. 18 000
B.P.

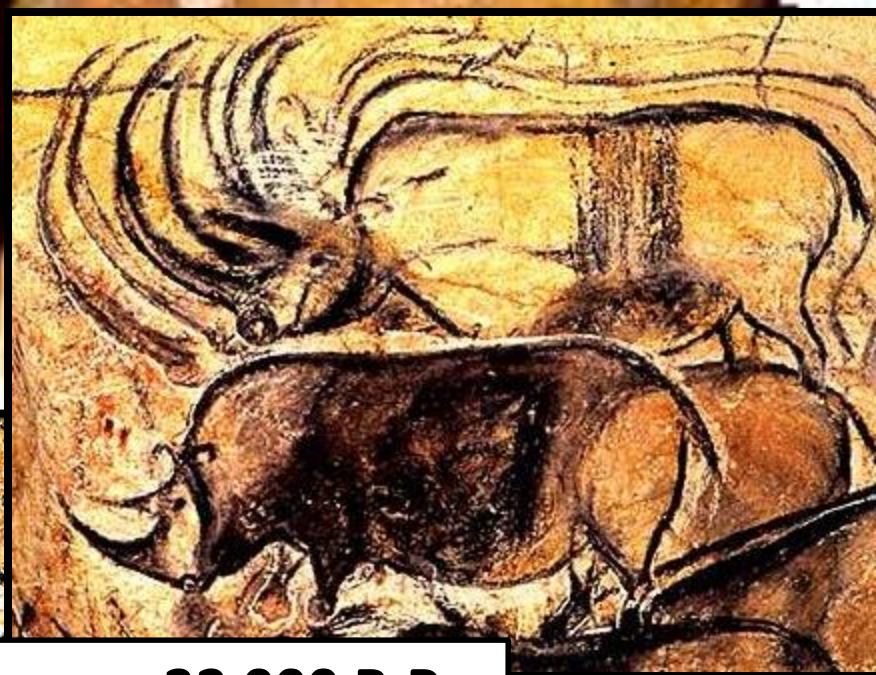


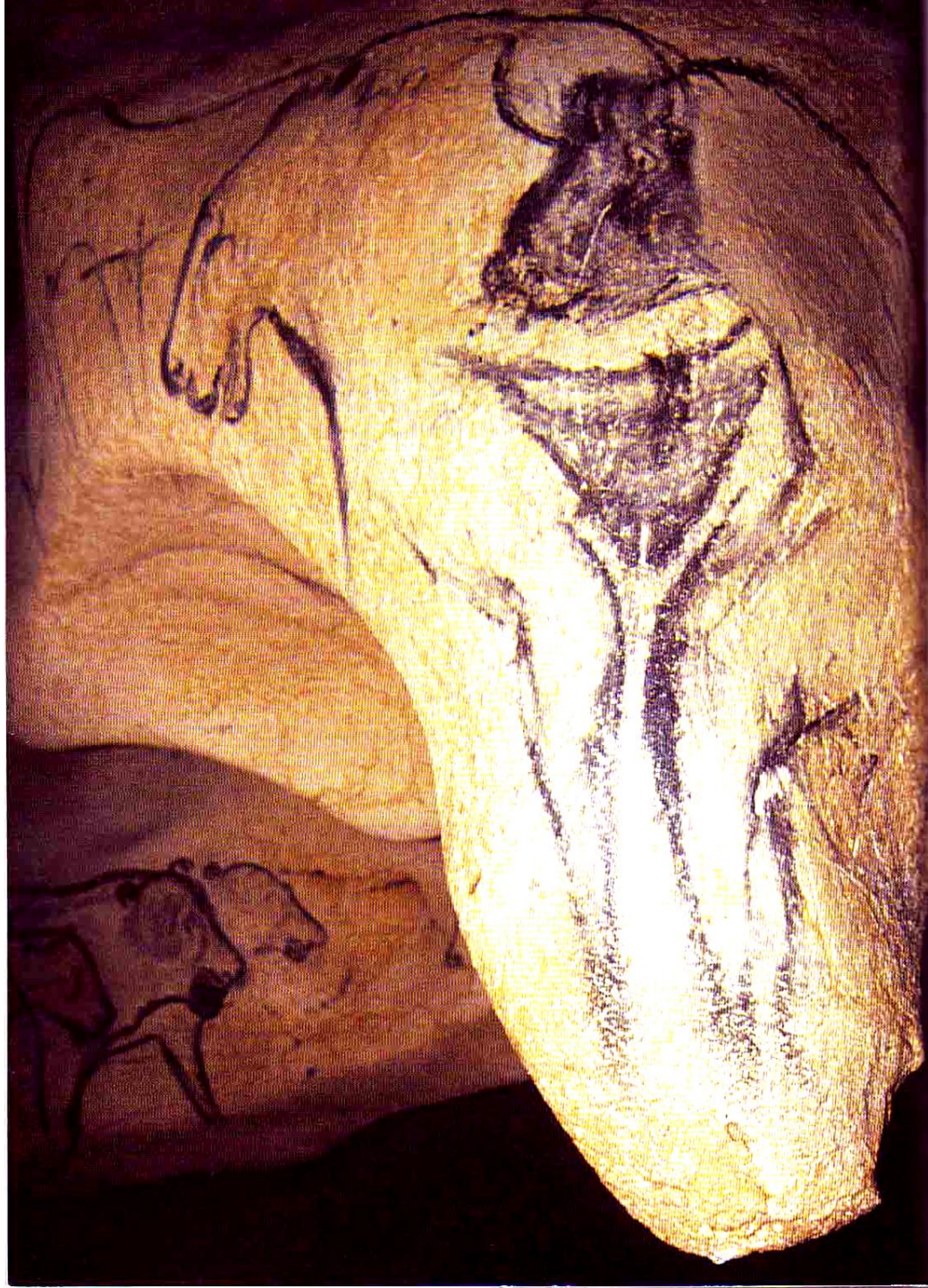


Lascaux

2

Chauvet, Ardèche, France. 32 000 B.P





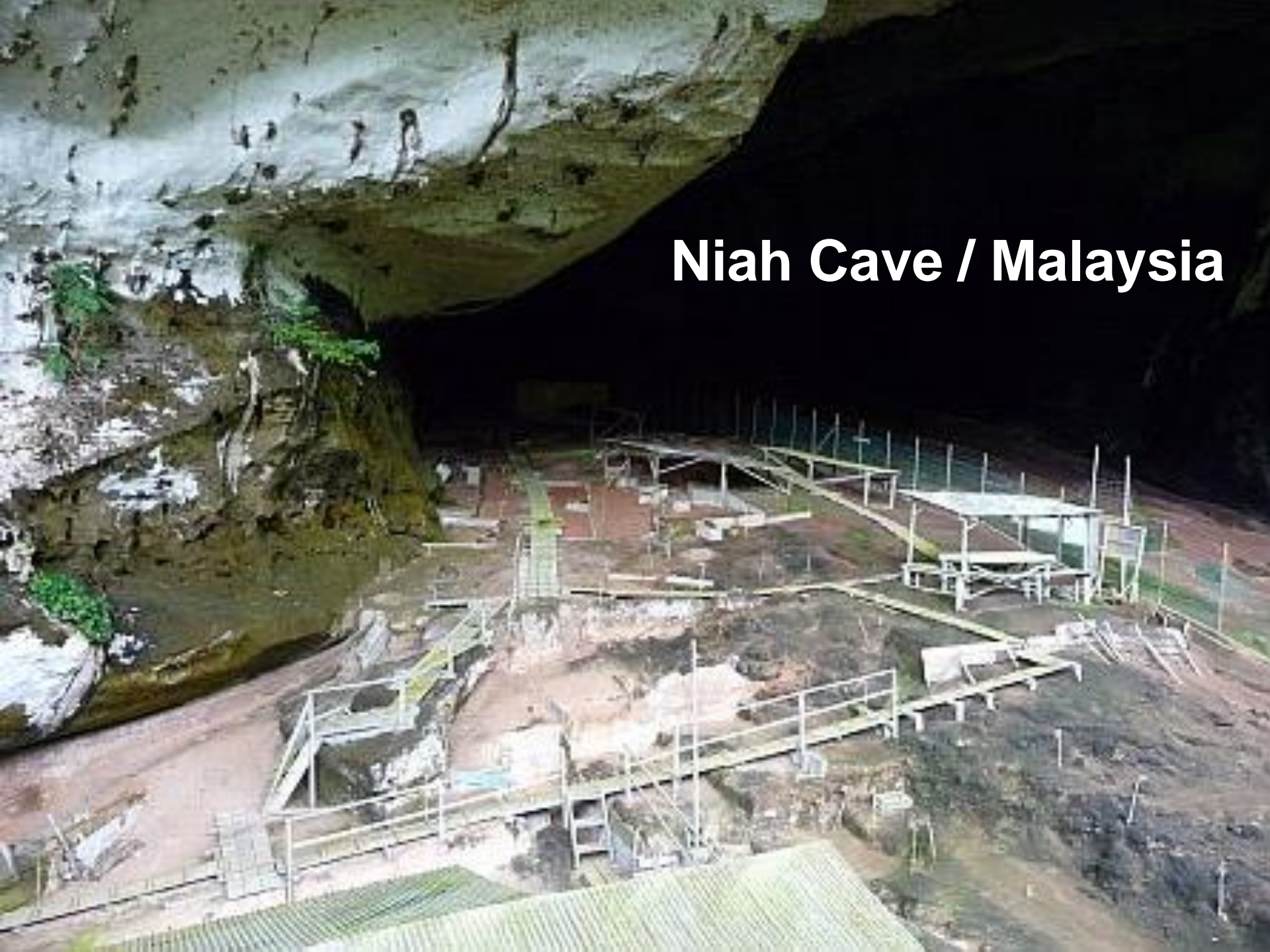


Altamira / Spain



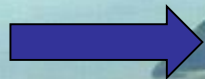
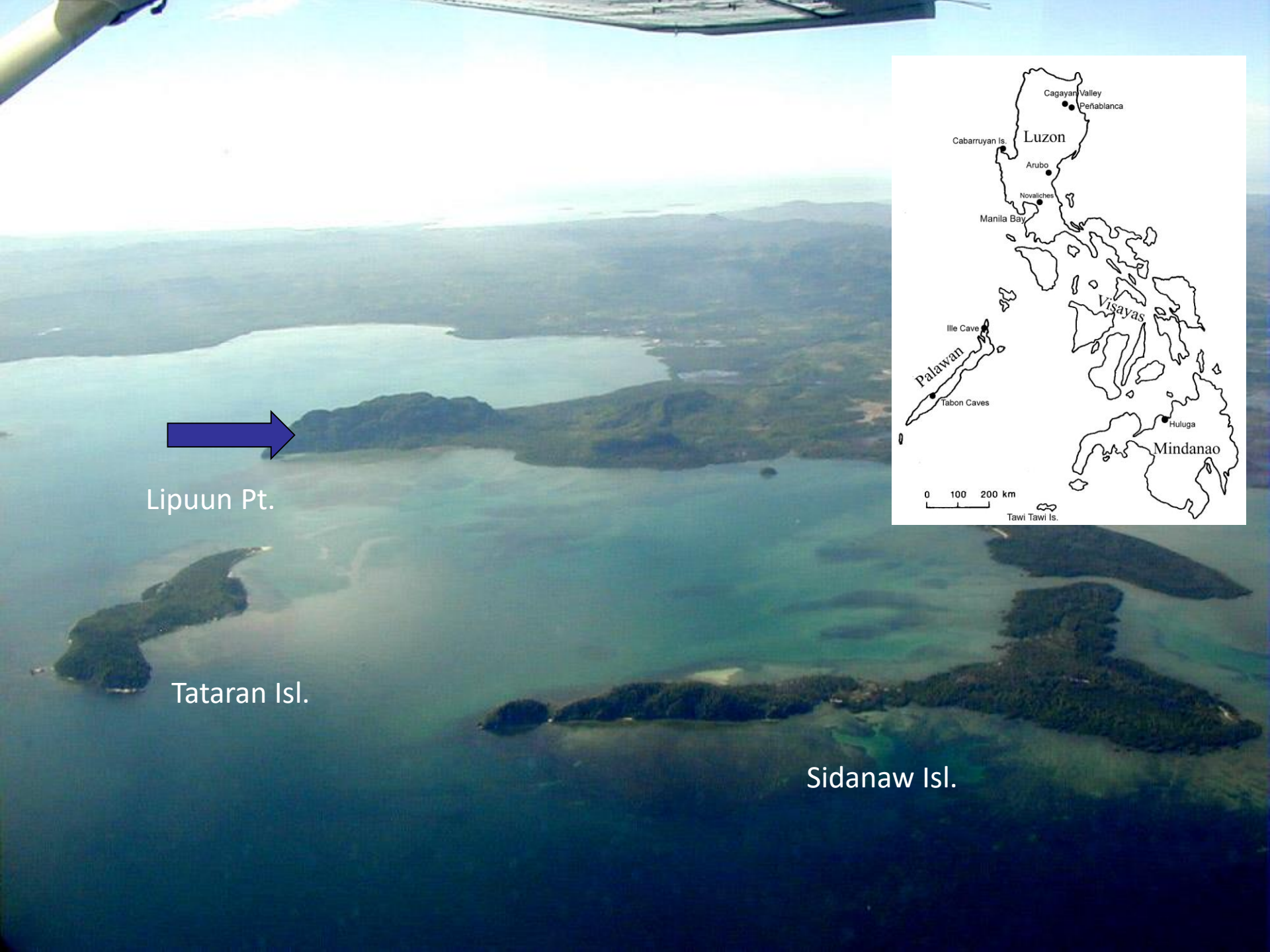
Pha Taem / Thailand

Niah Cave / Malaysia





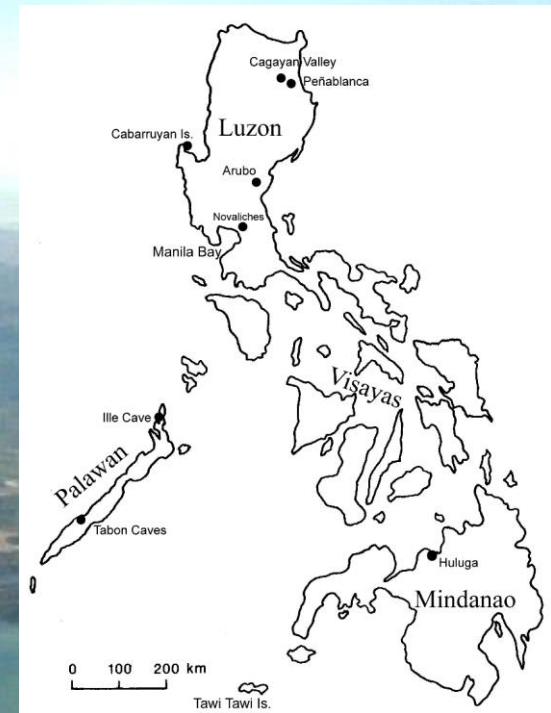
Tabon Cave / Palawan



Lipuun Pt.

Tataran Isl.

Sidanaw Isl.



Bilat Cave / Mindoro Occ.



Bilat Cave / Mindoro Occ.

Early Seafarers -The Mindoro Archaeological Project

