



CENTRE FOR
NEIGHBOURHOOD
STUDIES

LGU COVID-19 Recovery Planning Process

Mark Anthony M. Gamboa

25 June 2020 | LVGP-CLRG Webinar

Adapted from the working paper by the same author entitled "**Co-CrEaTE N4SID: Collaborative-Creation of Ecologically Just and Technologically Enhanced Neighbourhoods for Sustainable and Inclusive Development**"



Density matters



**Physical/social distancing
has become the norm**





—

**Urban-rural
linkage
is essential**



Differentiated impacts observed



S. No. 1418
H. No. 6616

Republic of the Philippines
Congress of the Philippines
Metro Manila

Eighteenth Congress
First Special Session

Begun and held in Metro Manila, on Monday, the twenty-third day of March, two thousand twenty.

[REPUBLIC ACT NO. **11469**]

AN ACT DECLARING THE EXISTENCE OF A NATIONAL EMERGENCY ARISING FROM THE CORONAVIRUS DISEASE 2019 (COVID-19) SITUATION AND A NATIONAL POLICY IN CONNECTION THEREWITH, AND AUTHORIZING THE PRESIDENT OF THE REPUBLIC OF THE PHILIPPINES FOR A LIMITED PERIOD AND SUBJECT TO RESTRICTIONS, TO EXERCISE POWERS NECESSARY AND PROPER TO CARRY OUT THE DECLARED NATIONAL POLICY AND FOR OTHER PURPOSES

Be it enacted by the Senate and House of Representatives of the Philippines in Congress assembled:

SECTION 1. *Short Title.* - This Act shall be known and cited as "Bayanihan to Heal As One Act".



MALACANAN PALACE
MANILA

BY THE PRESIDENT OF THE PHILIPPINES
EXECUTIVE ORDER NO. 114

INSTITUTIONALIZING THE BALIK PROSIRIYA, BAGONG PAG-ASA PROGRAM AS A PILLAR OF BALANCED REGIONAL DEVELOPMENT, CREATING A COUNCIL THEREFOR, AND FOR OTHER PURPOSES

WHEREAS, the National Capital Region (NCR) accounted for the 14 percent of the country's Gross Domestic Product at 38 percent based on the 2017 Philippine Statistics Authority, while its population of 12,877,253 accounts for 12.3 percent of the Philippine population per the 2015 census;

WHEREAS, the epicenters of the COVID-19 pandemic in the country are concentrated in the NCR;

WHEREAS, the uncontrolled upsurge of population in the NCR has led to the concentration of population in the NCR, which has led to the concentration of population in the NCR, which has led to the concentration of population in the NCR;

WHEREAS, Sections 9 and 21, Article II of the Constitution provide for the promotion of a just and dynamic social order and the independence of the nation and free the people from poverty and provide adequate social services, promote full employment, and an improved quality of life for all, and for the development of the national economy;

WHEREAS, Section 1, Article X of the Constitution provides that the national economy shall be more equitable and that the state shall ensure the development of the national economy, and an expanding productivity of the national economy, especially the underprivileged; thus, the state shall ensure the development of the national economy, especially the underprivileged; thus, the state shall ensure the development of the national economy, especially the underprivileged;

WHEREAS, the promotion of a just and dynamic social order and the independence of the nation and free the people from poverty and provide adequate social services, promote full employment, and an improved quality of life for all, and for the development of the national economy;

to fund PAPs approved as part of the BPI Program. Funding requirements for the succeeding years shall be included in the respective budgets of government agencies implementing the BPI Program.

Section 7. Reporting. The Council shall submit to the President, a bi-annual report on the implementation of this Order, including its accomplishments in terms of short-, medium- and long-term goals and budget utilization.

Section 8. Separability. If any provision of this Order is declared invalid or unconstitutional, the other provisions not affected thereby shall remain valid and subsisting.

Section 9. Repeal. All issuances, rules and regulations contrary to or inconsistent with this Order are hereby repealed, modified, or amended accordingly.

Section 10. Effectivity. This Order shall take effect immediately.

DONE, in the City of Manila, this 4th day of May, 2020, in the year of our Lord, Two Thousand and Twenty.

By the President,

SALVADOR C. MEDIALDEA
Executive Secretary



Butaca





MALACAÑAN PALACE
MANILA

BY THE PRESIDENT OF THE PHILIPPINES
EXECUTIVE ORDER NO. 114

INSTITUTIONALIZING THE BALIK PROBINSYA, BAGONG PAG-ASA PROGRAM AS A PILLAR OF BALANCED REGIONAL DEVELOPMENT, CREATING A COUNCIL THEREFOR, AND FOR OTHER PURPOSES

WHEREAS, the National Capital Region (NCR) accounted for 9 percent of the country's Gross Domestic Product at 36 percent based on the 2015 census; and

to fund PAPs approved as part of the BP² Program. Funding requirements for the succeeding years shall be included in the respective budgets of government agencies implementing the BP² Program.

Section 7. Reporting. The Council shall submit to the President, a bi-annual report on the implementation of this Order, including its accomplishments in terms of short-, medium- and long-term goals and budget utilization.

Section 8. Separability. If any provision of this Order is declared invalid or unconstitutional, the other provisions not affected thereby shall remain valid and subsisting.

Section 9. Repeal. All issuances, rules and regulations contrary to and inconsistent with this Order are hereby repealed, modified, or amended.

Section 10. Effectivity. This Order shall take effect immediately.

WHEREAS, to reverse migration to the NCR and other congested metropolises, as well as to attain rural prosperity through equitable distribution of wealth, resources and opportunities, a balanced regional development program to foster socially cohesive, resilient and sustainable rural communities needs to be institutionalized;

provides for an improved and an improved development.

WHEREAS, Section 1, Article XIV of the Constitution provides that the State shall ensure a more equitable and balanced development of the country and an expanding productivity of its resources;



Section 4. The Balik Probinsya, Bagong Pag-asa Program and its Key Areas. The BP² Program is hereby established as a national program of the government, and adopted as a continuing strategy to drive inclusive and balanced urban and rural development, ensure rural prosperity and complement initiatives towards attaining resilient and sustainable communities.

Balik Probinsya, Bagong Pag-asa Program



Image Source: Joseph Almer Pedrajas | Manila Bulletin

TRANSFORMATION OF EDSA

DESIGN APPROACH



Bike lane

Plastic bollards
Stencil markings
Signage

Pedestrian Crossing

Paint
Signage
Speed hump

Segregated bus lane

Concrete barriers at station
Low barrier at lanes

Boarding Area

Scaffolding
Paint
Signage



PHILIPPINE ARMY
www.army.mil.ph

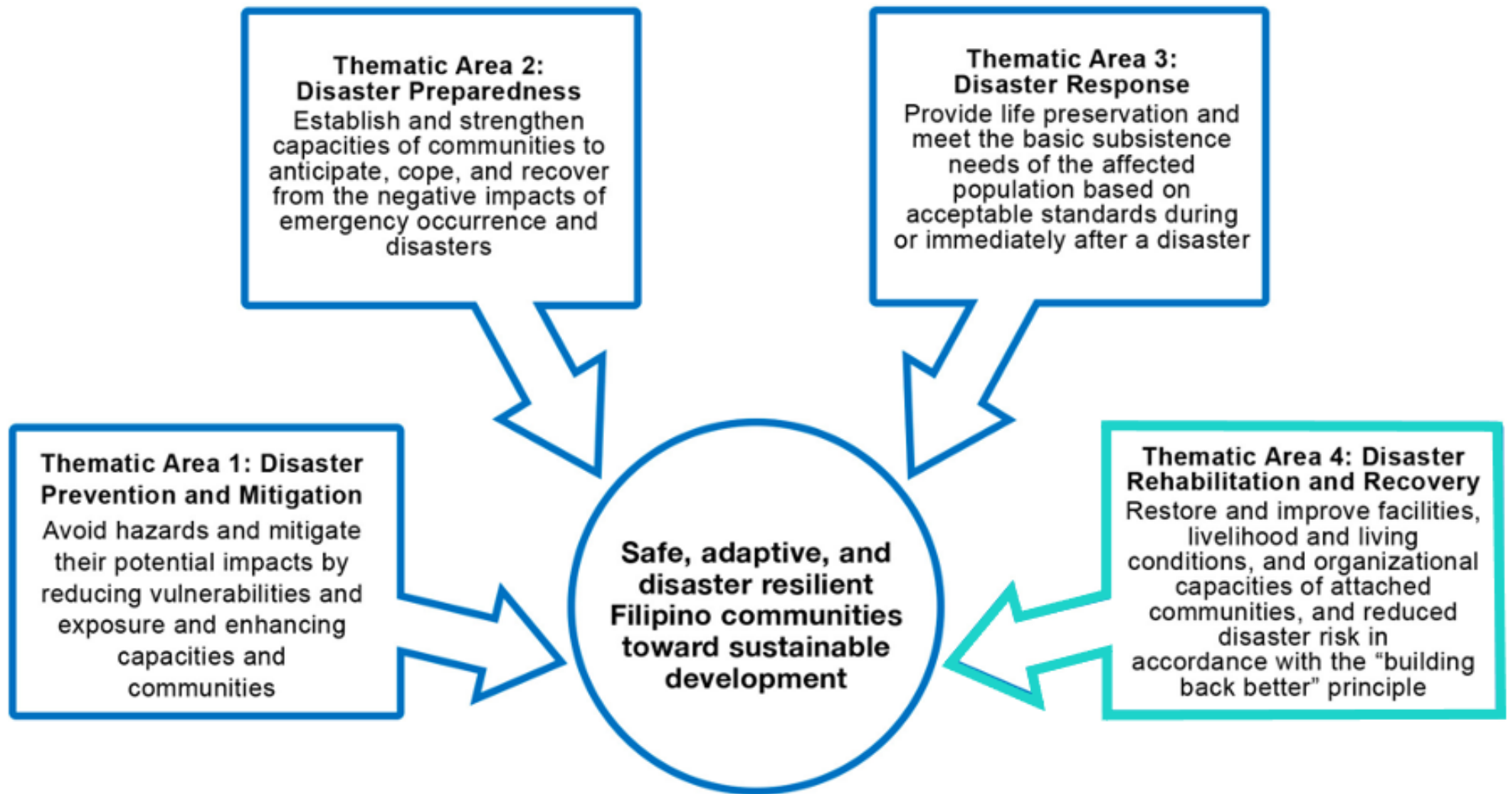
We have the solutions

BUT what was the problem?



“We simply cannot return to where we were before Covid-19 struck, with societies unnecessarily vulnerable to crisis. We need to build a better world”

UN Secretary-General, April 2, 2020



Rehabilitation and Recovery Framework

- **Long-term**

- Safe, adaptive, and disaster-resilient Filipino communities that are protected from risks and that can cope with and recover quickly from unfortunate events

- **Medium-term**

- Economic and social conditions restored with higher level of resilience and poverty reduced

Process



**Post-disaster
needs
assessment**



**Rehabilitation
and recovery
programs
formulation**



Approval



**Updating of
the Investment
Program**

Content

Background
and description
of affected
areas

1

Assessment of
the effects of
the disaster

3

Objectives

5

Targets

7

Phasing of
PPAs and
implementation
arrangements

9

Sector
PPAs

11

Communications
strategy

13

2

Description of
a hazard event

4

Post-disaster
rehabilitation
and recovery
framework

6

Rehabilitation
and recovery
strategies

8

Proposed land
use framework

10

Financing and
investment
requirements

12

Mechanism for
monitoring and
evaluation



Transitioning to sustainability and justice

**If the purpose of planning is
not for human and
planetary health,
then what is it for?**

UN-Habitat and World Health Organization (2020)

**At least 963 families in Brgy. Addition Hills in
Mandaluyong lost their homes [on 01 June
2020], the first day of easing COVID-19
quarantine measures in Metro Manila.**

Photo by: @chinogaston | DMA News

Transitioning
to the “**NEW NORMAL**”
or better still,
the “**SMART NORMAL**”



Paradigm shift that
provides an alternative
framework to **RE-THINK**
urbanisation



**REIMAGINATION OF
SPACE** through the
smart and sustainable
neighbourhoods lens

A city skyline silhouette against a bright sun in a hazy sky. The sun is a large, bright, glowing orb in the upper right quadrant, partially obscured by the silhouettes of buildings. The sky is a mix of dark and light grey tones, suggesting a hazy or overcast day. The buildings are dark, solid shapes of various heights and widths, creating a jagged horizon line. The overall mood is one of resilience and rebuilding.

1

**Build
Back
Better**

Major Action Areas



**Livelihood & Business
Development**



Agriculture & Fisheries



**Housing &
Settlement**



**Physical
Infrastructure**



Social Services



Livelihood & Business Development





Agriculture & Fisheries



Reimagining Landscaping: Combining Form and Function

UPLB OVCRE

Urban “Barangay” Gardens

Project PROPEL



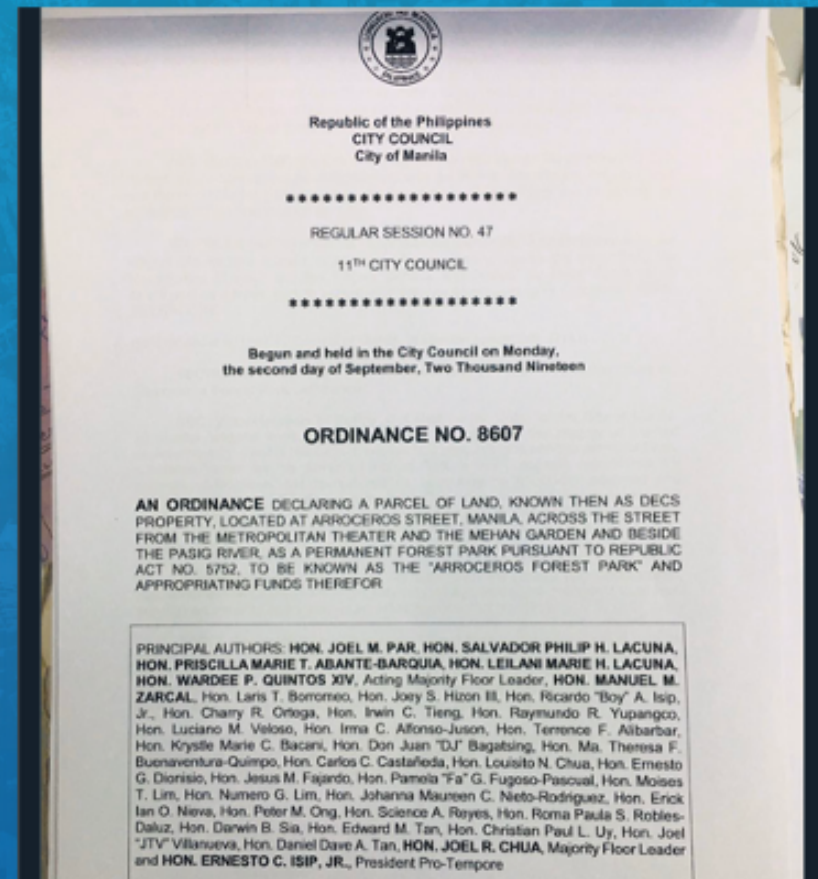


Housing & Settlement





Physical Infrastructure



Seoul's ambitious Skygarden revives a disused elevated 1970s highway with 24,000 plants – and is open to all, 24 hours a day



Photograph: **Ossip van Dulvenbode**

Image Source: <https://www.theguardian.com/cities/2017/may/19/seoul-skygarden-south-korea-london-garden-bridge#img-1>



Social Services



2

Recalibration of Local Development Plans



**Whole-of-
government**



**Whole-of-
society**

Adaptive planning



Understanding the **dynamics** that give rise to desirable or undesirable phenomena and less about how to find solutions to predetermined problems



Moving from a prescriptive activity to a process of **learning**



Engaging the communities through a **collaborative** process



Integrating **bottom-up processes** of knowledge and data collection and top-down agency

Mancebo & Certomà (2019)





SUSTAINABLE DEVELOPMENT GOALS



INDUSTRIAL 4.0



Automation



Big Data



Cloud computing



Autonomous

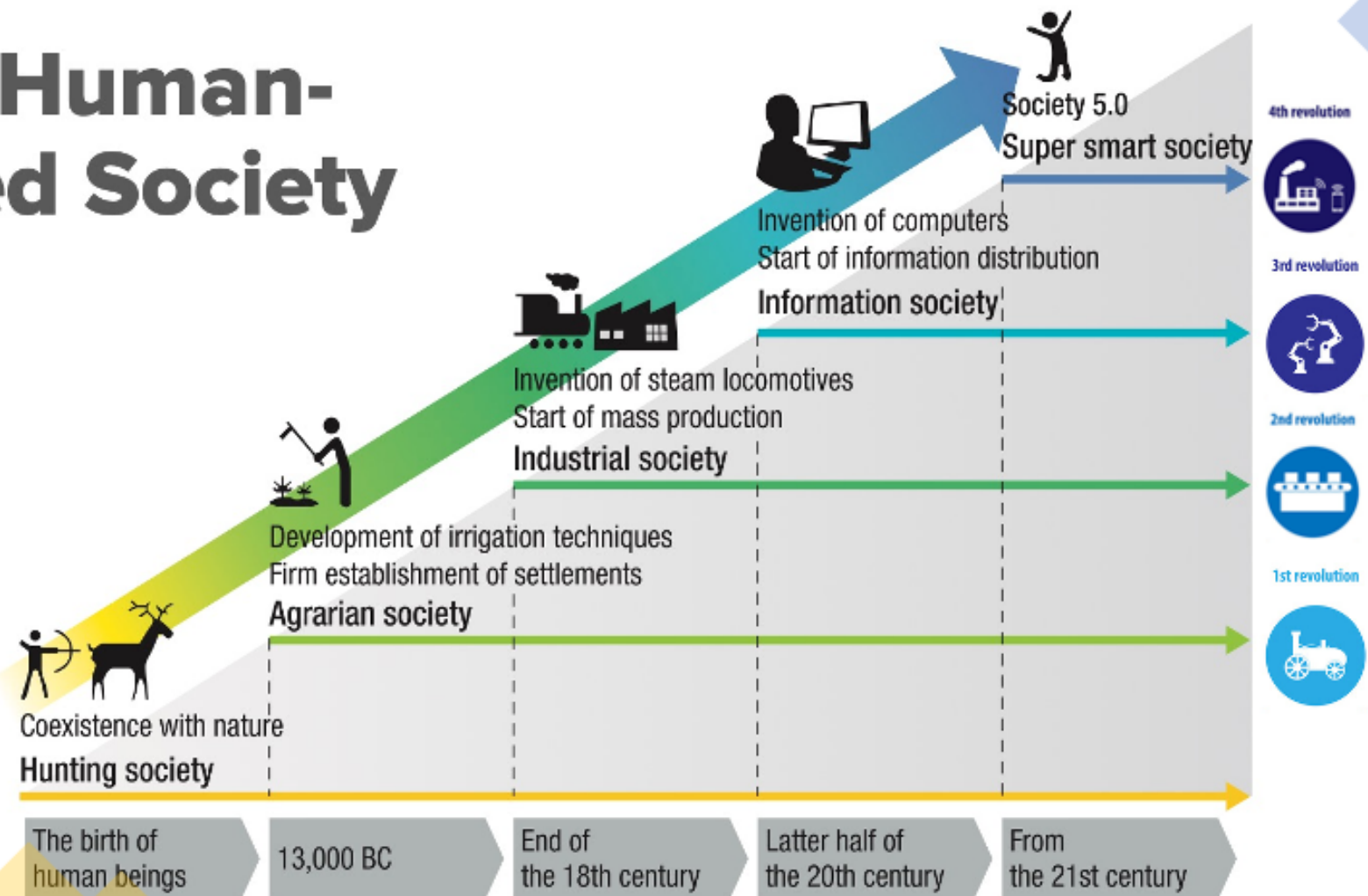


IoT



Data Management

New Human-Centred Society



Economic and social innovation by deepening of Society 5.0

Source: M. Fukuyama (2018) based on material from the Japan Business Federation (Keidanren) "Japan's Initiatives — Society 5.0"; Y. Harayama, "Society 5.0: Aiming for a New Human-centered Society", Hitachi Review, vol. 66, no. 6, 2017, pp. 556-557



ANALYZE

your neighbourhood

PLAN

your neighbourhood

VISUALIZE

your neighbourhood

3 Reconceptualising Spatial Planning



Promote an antidisciplinary space through citizen/civic science



Conduct metadesign planning at the neighbourhood level



Adopt a place-based approach



Plan across scales



Harness AI and algorithms

**“Things are not always what they seem;
the first appearance deceives many.”**

- Phaedrus



CENTRE FOR
NEIGHBOURHOOD
STUDIES

End of presentation



contact@cens.ph



[@cens_ph](https://twitter.com/cens_ph)



cens.ph

© 2020 All rights reserved.

Gamboa, Mark Anthony M. "LGU COVID-19 Recovery Planning Process." PowerPoint presentation, Webinar, Preparing and Financing LGU COVID-19 Recovery Plans, LVGP and CLRG, 25 June 2020.

Centre for Neighbourhood Studies

Non-government, non-profit organisation on neighbourhood science engaged in research and development, capacity enhancement, and partnership-building towards smarter and sustainable transformation of neighbourhoods.